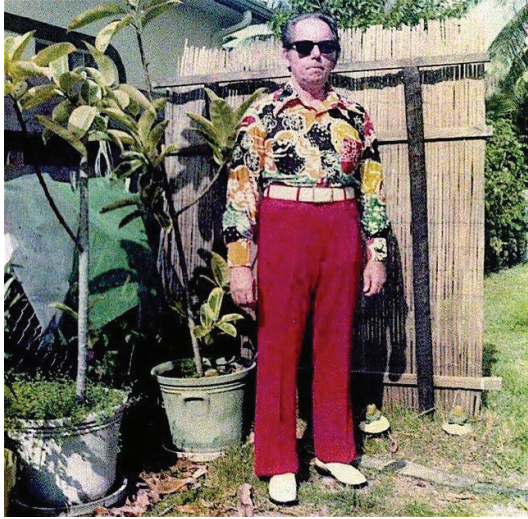


FROM THE DESK OF RUSSELL "THE HAMMER" GILLESPIE



Hey Stage Crew!

Sometimes, these kids show up for a plug and play gig and because they're a ukulele band, the crew thinks they're a cabana band, all aloha shirts and Tiny Bubbles.

Then the crew gets flustered because They're SO NOT THAT. They're the full rock show, not those dinner hour acts I produced in the Catskills in '59.

You work hard -- I thought this advance notice (warning?) might help you know what you're in for. I know you'll make these crazy kids sound amazing.

Thanks, and if you're ever in the Catskills, look me up.

Russell "The Hammer" Gillespie
MANAGER • THE SEATTLE CASTAWAYS

